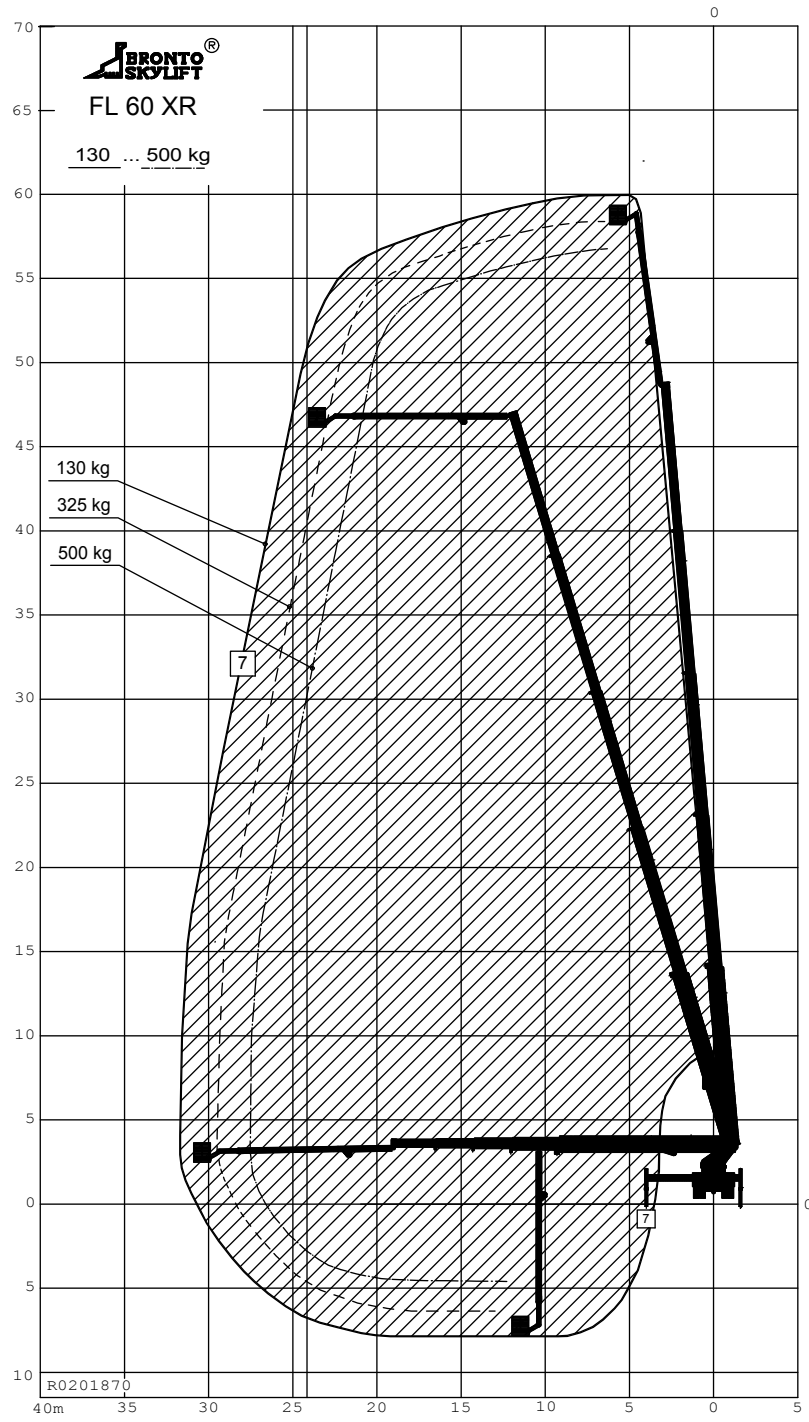


NOTE1:
NOTE2:
REMARKS: PRELIMINARY



TECHNICAL DATA

Safe working load max. : 500 kg
 Max. permitted wind speed : 12.5 m/s
 Typical GVW : 33 ton
 min. operating weight : 31 ton
 Outrigger width and length c/c
 - normal jacking : 8.0/6.9 m
 - one side jacking : 5.6/6.9 m
 - narrow jacking : 3.2/6.9 m
 Calculation code :

EU

PRELIMINARY

All rights reserved
 This specification may be revised without notice.
 This document, which is our exclusive intellectual property, shall be treated as strictly private and confidential and shall neither be copied nor communicated to any third person without our written consent.
 BRONTO SKYLIFT OY AB
 Tampere Finland

ULOTTUVUUSKAAVIO
 RÄCKVIDSDIAGRAM
 OUTREACH DIAGRAM
 ARBEITSDIAGRAM
 DIAGRAMA DE TRABAJO
 РАБОЧАЯ СХЕМА

All rights reserved
 Änderungen vorbehalten
 Sous réserve de modification
 Väimätajä pidetään oikeuden muutoksiin
 Reservation for alterations

1 : 225	BRONTO SKYLIFT	FL 60 XR	
(A3)	OUTREACH DIAGRAM		DRAWN KKe 2015-11-02
0	SAFE WORKING LOAD MAX 500 kg	APPVD	
	BRONTO SKYLIFT® BRONTO SKYLIFT OY AB FINLAND	LAYER DWG NUMBER R0201870 BRONTOCAD	REV